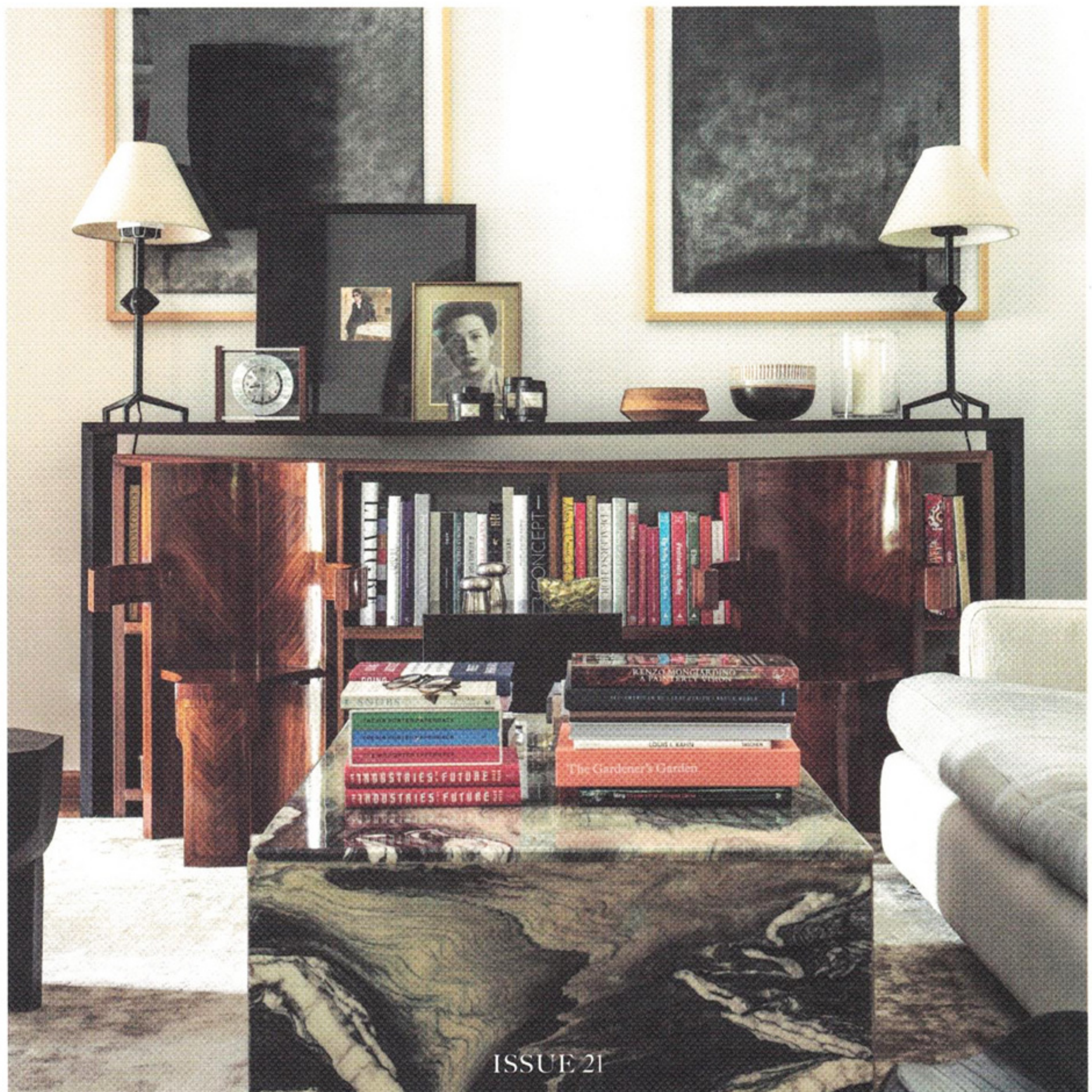


design anthology

INTERIORS / ART / ARCHITECTURE / TRAVEL



ISSUE 21

New Hotels

From left to right
The Stratford, Kimpton Da
An Hotel, Dá Licença



Image by Rich Stapleton

Condominio Monti — Rome

Architecture and design firm STUDIOTAMAT and interior designer Sabina Guidotti, founder of Bludiprussia, have transformed two neighbouring buildings into this 33-room hotel that oozes Italian flavour and soul, with views over the Colosseum to boot. The first building houses guest rooms and a rooftop dining terrace, while the second is filled with studio flats, equipped with their own kitchens and living rooms, and the 45-square-metre penthouse with a private terrace. To the lively neighbourhood's roster of chic wineries and bars, Condominio Monti adds its ground-floor bar-bistro Magasin and restaurant Osteria Oliva, led by Michelin-starred chef Fabio Baldassare.

Halekulani — Okinawa

With its original century-old location in Hawaii, Halekulani's second iteration finds its home in the Okinawa Kaigan Quasi-National Park in Onna Village, a location that shares some of Japan's most picturesque coastline. Each of the resort's 360 rooms overlooks the water, while the five villas also boast private pools and natural hot springs. New York-based Champalimaud Design outfitted the interiors with the intention to imbue all spaces with sea and sky, and the guest rooms' palette of Halekulani's 'seven shades of white' maximises the sublime views. Dining options comprise four signature restaurants including Innovative, at which two-star Michelin chef Hiroyasu Kawate is the consulting chef.

Dá Licença — Estremoz

Set on a 120-hectare estate in a national eco-reserve and offering breathtaking views of the surrounding landscape, Dá Licença is an almost monastic Arts & Crafts-influenced retreat in Portugal's Alentejo region. The hotel's owners undertook the design themselves, and interiors are inspired by their love of art and nature, while local architectural firm Procale rehabilitated the series of historic buildings that now house five suites and three bedrooms in total, all with private gardens and terraces, and some with private pools. An old olive pressing room set below ground is now a gallery for the owners' art collection, with a restaurant set to open in the space soon.

Kimpton Da An Hotel — Taipei

Fittingly for Kimpton's entry into Asia, the brand invited eminent Asian designers Neri&Hu to outfit the 129-room hotel in one of Taipei's hippest neighbourhoods. The result is guest rooms that combine Asian tradition and modernity through a minimalist aesthetic with a strong focus on craft and material. Under chef James Sharman, the Tavernist restaurant offers local and organic fare, while Kimpton's daily social hour in the hotel's lobby lounge offers guests a chance to socialise over cocktails. The hotel also offers free fitness and wellness classes, and a unique pet-friendly policy for those who prefer to travel with their furry companion.



The Stratford
— London

Danish design studio Space Copenhagen brings its brand of Nordic cool to The Stratford, a luxury hotel occupying the first seven floors of a new skyscraper in East London's up-and-coming cultural area of Queen Elizabeth Olympic Park. While the hotel itself celebrates timeless glamour and New York's legendary Chelsea hotel in the 1950s, the double-cantilevered building provides a futuristic backdrop for Space Copenhagen's design, where natural materials, warm metals and concrete flooring figure prominently alongside bespoke furniture and pieces from the studio's existing portfolio. Two restaurants bookend the property: the ground-floor Stratford Brasserie and the seventh-floor Allegra.

ROOST East Market
— Philadelphia

The third roost Apartment Hotel is the brand's largest yet, with 60 fully furnished apartments spread over five floors of a new Morris Adjmi Architects building in the Midtown Village neighbourhood. Having already designed the interiors of the first two locations, here Adjmi's firm has expanded its remit to include the architecture. Four apartment sizes are available, and all are equipped with full kitchens and outfitted with contemporary, antique and custom furnishings and artwork. A broad array of residential amenities elevates the concept, including community vegetable gardens and grills, a 24-hour gym, library and lounge, and private screening room.

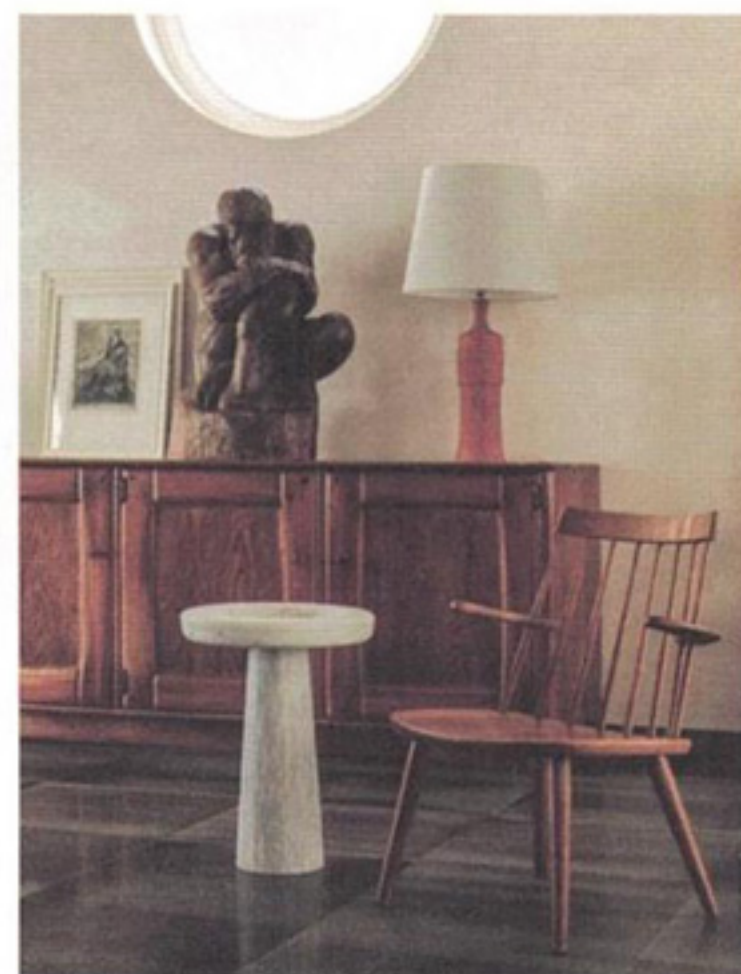


Image by Francisco Nogueira

The Blake
— New Haven

Named after Yale's first female graduate Alice Blake, this 108-room hotel is walking distance from the university and close to several top food and cultural spots. Adding to this scene is the hotel's restaurant, Hamilton Park, and rooftop bar, which are the first in the area to offer a culinary programme by a Michelin-starred chef. Designed by HVS Design in Maryland and London-based Alexander Waterworth Interiors, The Blake aims to combine the subtle sophistication of New England with an emphasis on community, its offering including poet breakfasts, salon readings, jazz brunches and cooking and mixology classes.

Page148
— Hong Kong

In Hong Kong's historic Tsim Sha Tsui district, Page148 marks the Butterfly Hospitality Group's inaugural Page hotel. The property's architecture is by P&T Architects and interiors come courtesy of local firm KplusK Associates. While sustainability and urban exploration are at the heart of the hotel's ethos, coffee culture is another influence, with the lobby transformed into artisanal coffee house Page Common. In the guest rooms, which span 20 floors, large windows afford impressive views and make Page148 a great location to explore the city from a bird's-eye view as well as from the bustling streets below.